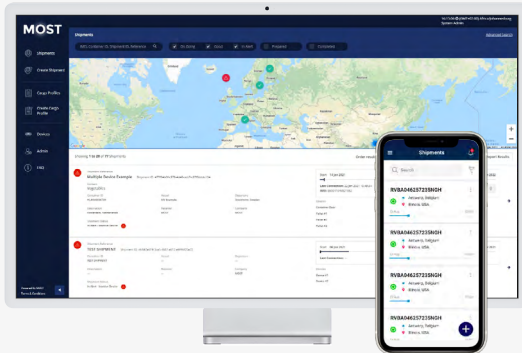




Take **full control** of your supply chain

MOST 2.0



most.tech



Temperature



Humidity



Dew Point



Movement



Shock



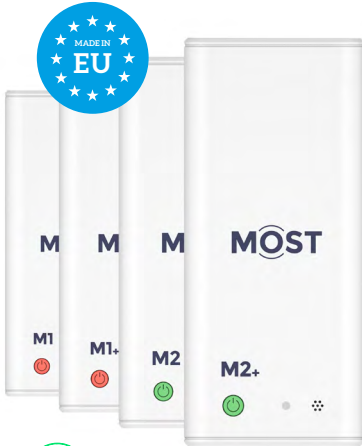
Door Opening



Location

Become a market leader in transportation

From departure to arrival, MOST provides you with real-time updates on all the external and internal influences affecting your cargo. With perfectly accurate data, easily accessed and evaluated with our user-friendly and web-based interface, you will be able to reduce the risk of damage and optimize all future transport.



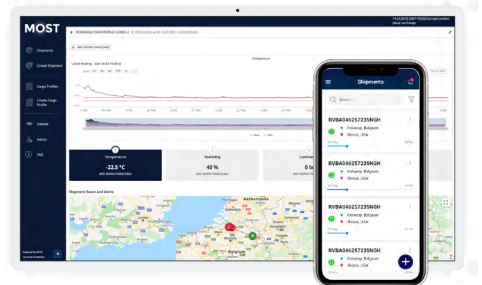
Committed to sustainability

Market-leading technology

- 90-day battery life.
- Reusable & rechargeable.
- 4 digital sensors: temperature, door opening, humidity and movement.
- Location updates via GSM network and GPS.
- Global visibility.
- Optional extra battery for device longevity.
- Continuously uploads all data via network connection.

24/7 data access & reporting

- User-friendly mobile interface and APP
- No hardware or software installation
- Completely web-based: never lose data
- Share device data
- Geofencing and milestones
- Tailored reports at the push of a button
- Alarms and notifications via email
- API enabled to any third party system



MOST Sense App • Available on



 App Store

 Google Play

One for every need

Price effective or global coverage for sensitive goods? Connects directly to the cloud, a communication technology for every use case, supports indoor positioning and monitoring works on land, sea and air (data storage when no connectivity).

	M1	M1+	M2	M2+
Communication				
2G	●	●	●	●
LTE-M			●	●
Bluetooth (BLE)	●	●	●	●
Condition				
Temperature	●	●	●	●
Humidity		●		●
Shock		●		●
Movement		●		●
Door Opening	●	●	●	●
Dew point		●		●

M1

Price effective and suitable for food and beverage in countries with 2G connectivity.

M1+

Price effective and suitable for food and beverage in countries with 2G connectivity. Additional sensors for theft prevention, wellness of cargo and shock indication on your valuable goods.

M2

Global coverage for sensitive goods within food and beverage.

M2+

Global coverage for sensitive goods, additional sensors for theft prevention, wellness of cargo and shock indication on your valuable goods. Full sensor data in order to secure your valuable cargo from door to door all over the world.

Device Specification

Location	Cell based location (GSM)	GPS
Battery type & life	Lithium-ion UN38.3 Compliant	90 days' use * Rechargeable via USB-C
Start-up options	Manual push button	
Certifications	Quality assurance CE/FCC	NIST traceable
Water resistance	IP67 = water proof	
Attachment	Attaches with double-sided tape. Device should be attached close to doors	
Sales pack	Packaged in 10-device sales packs	
Computer / mobile interface / APP	Easy access to your data. Programmable alert levels, including: light, temperature, humidity, location and shock sensors.	
Alarm function	Programmable high and low limits. An alarm is triggered when measurement exceeds set limits. Geo-fence Alerts.	
API integrations	REST and PUSH service	
Size and weight	60 x 136 x 29 (mm) – 2,36 x 5,35 x 1,14 (inch) 150 g (0,33 lb) with one battery. With two batteries +45 g (0,1 lb).	
Sensors	Default 60 minutes measurement and data-sending interval. Upload can be adjusted. 10 minutes measurement when in alert mode.	

M1, M1+, M2, M2+

Digital temperature sensor

Range: - 20°C to 60°C

Resolution: 0.01°C

Accuracy: ±0.5°C in range -20°C to 0°C

±0.2°C in range 0°C to 60°C

Certification: NIST TRACEABLE

Digital movement sensor

Triggered by movement

Digital light sensor

Triggered by light

Ambient light sensor

Measures up to 120k Lx

M1+, M2+

Digital humidity sensor

Range: 0% to 100% RH

Accuracy: ±2% RH from 20% to 80%

±3% RH from 0% to 20%

and 80% to 100%

Relative humidity res.: 0.1% RH **

Digital shock sensor

3-axis G-sensor

Accelerometer

Rates: 10 Hz to 100 Hz,

Shock-detection with full traceability

* Battery life: Based on hourly sensor readings and GSM uploads, 90 day's use (3 months' storage).

** Humidity: RH accuracy stated within temperature exposure range of 5°C to 60°C, non-condensing.

Unbroken Communication

The MOST device continuously uploads data to the internet via an LTE and/or GSM network connection, with automatic backup to the cloud – giving you the ability to make informed decisions based on real-time data, and unprecedented power to build your business.



24/7
data control



Transparency for
all stakeholders



Increased
quality & safety



Enables
proactive action



Eliminates
human error



Increases
profit potential

Want a special demonstration of our service?

We will be happy to show how you can improve
and secure your supply chain with MOST.

sales@most.tech

MOST Sense App · Available on



App Store

Google Play

MOST

most.tech